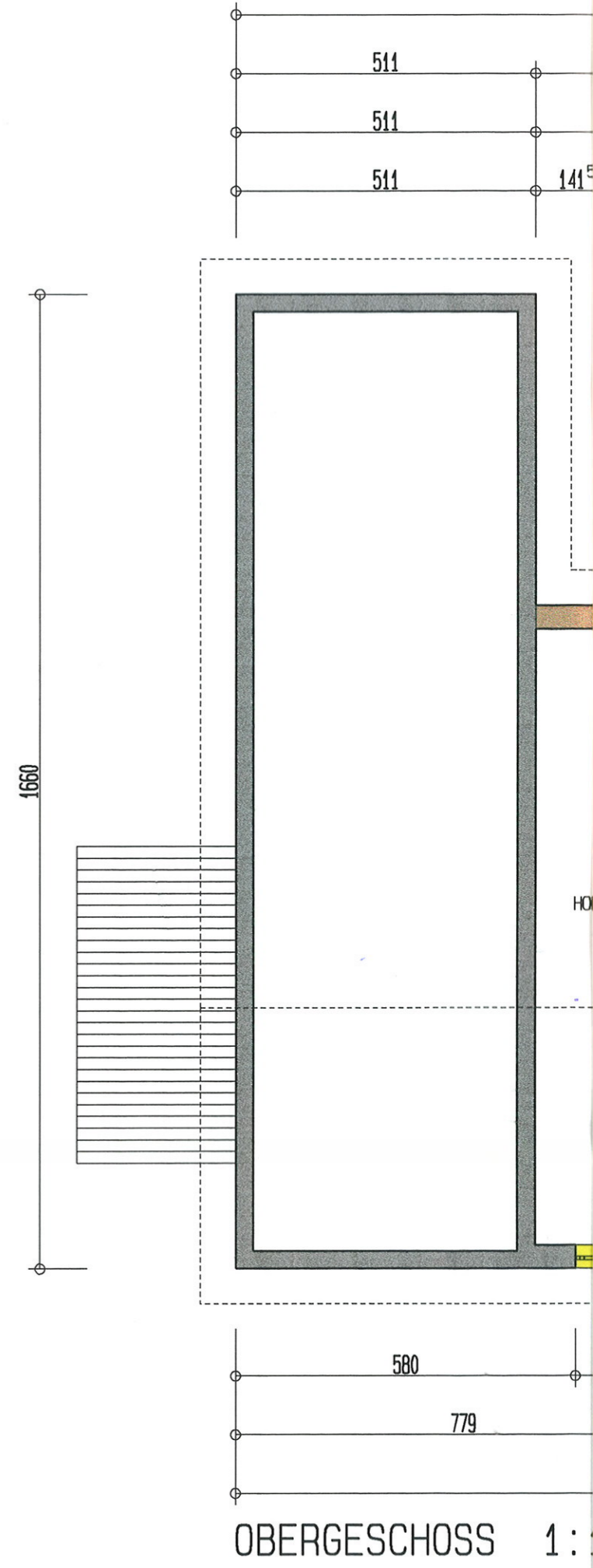


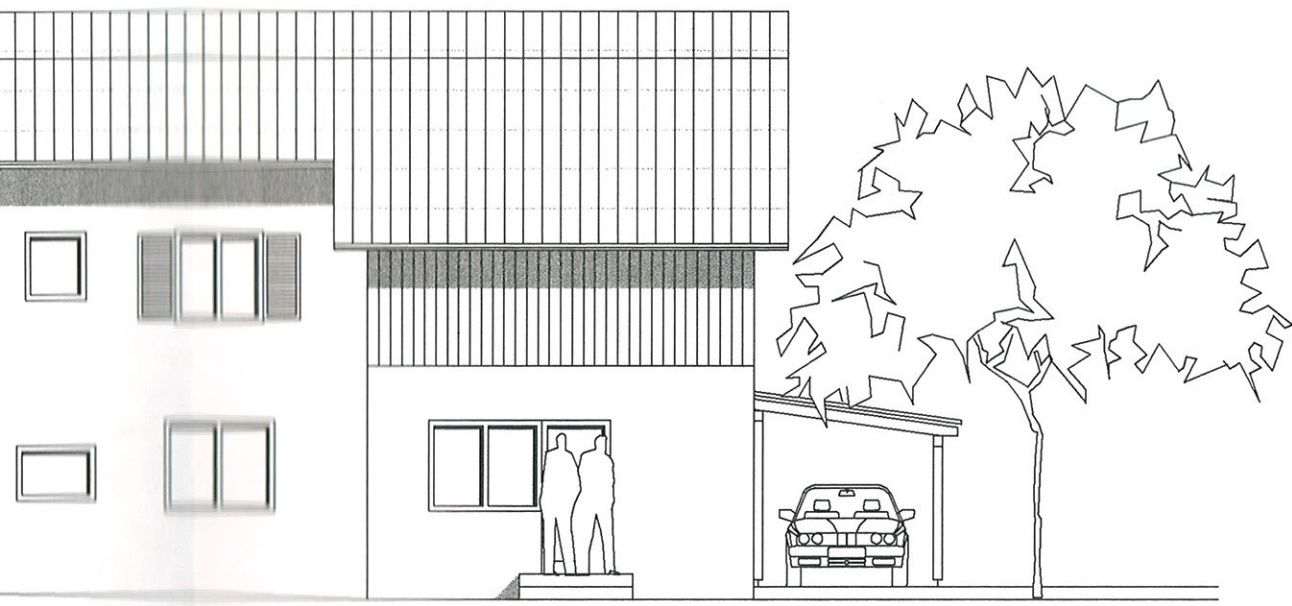
ERDGESCHOSS 1:100 = 147 m²

- Legende:
- Bestand
 - Neubau Mauerwerk
 - Neubau Leichtbauwand
 - Abbruch

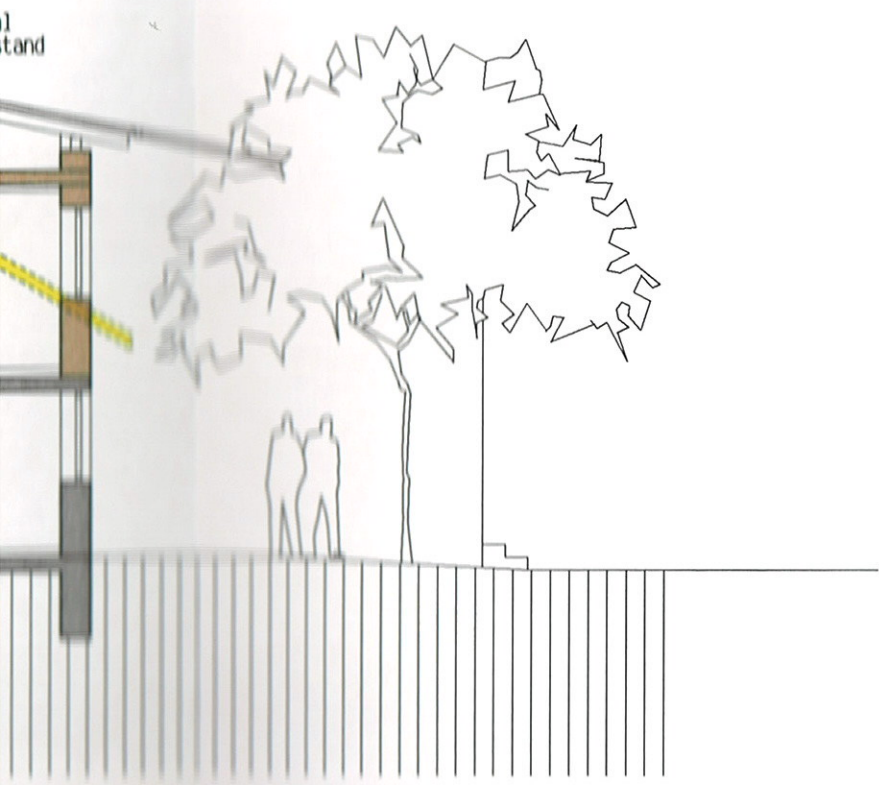


OBERGESCHOSS 1:100


NEUBAU



1:100



Legende:

-  Bestand
-  Neubau Mauerwerk
-  Neubau Leichtbauwand
-  Abbruch